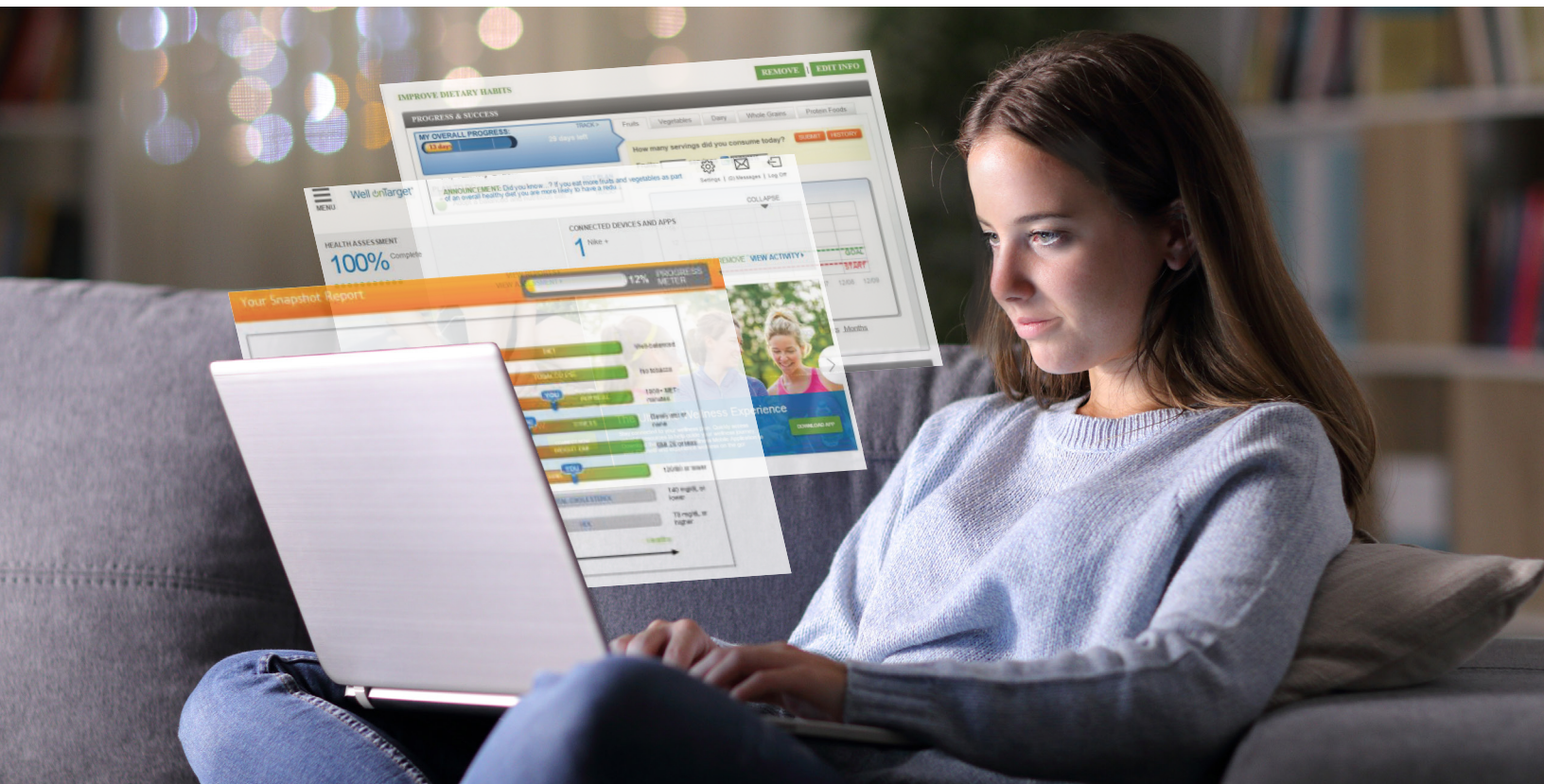




BlueCross BlueShield
of Illinois



Live Well with the Well onTarget Member Wellness Portal

The Well onTarget® Member Wellness Portal at wellontarget.com provides you with tools to help you set and reach your wellness goals. The portal is user-friendly, so you can find everything you need quickly and easily.

Explore Your Wellness World

When you log in to your portal, you will find a wide variety of health and wellness resources, including:

- The Health Assessment (HA)
- Self-Management Programs
- Health trackers
- Trusted news and health education content

See Your Stats in a Flash

Everything you want to see quickly is on your dashboard. The dashboard shows all of your Well onTarget programs. You can see where you are today compared with where you were when you started. You can also read the latest health news, check your activity progress and more.

Take a Snapshot of Your Health

The HA asks you questions about your health and habits.¹ You then get a Personal Wellness Report. This report suggests ways to make positive lifestyle changes. Your report can also help you decide which Well onTarget program to start first to get the most benefit. You can even print a Provider Report to share with your doctor.

Well onTarget®

Blue PointsSM Program²

Small rewards may motivate you to make positive changes to meet your wellness goals. With Well onTarget, you can earn Blue Points for making healthy choices. If you enroll in the Fitness Program or take your HA, you earn points.³ You can also earn points when you achieve milestones in the Self-Management Programs. Redeem your Blue Points for gift cards for yourself or family and friends.⁴

Health Tools and Trackers

Knowing what you eat and how much you work out can help you reach your goals. But keeping track of all you do can be time-consuming. To make it easy, the portal has trackers that let you record how much sleep you get, your stress levels, your blood pressure readings and your cholesterol levels.

The portal also offers a symptom checker. When you don't feel well, this tool can help you decide if you should see a doctor.

Self-Management Programs

These programs consist of:

1. Interactive programs with learning activities and content that focus on behavioral changes to reinforce healthier habits.
2. Educational programs that inform about symptoms, treatment options and lifestyle changes.

These two learning methods allow you to study on your own time and may help you get to the next level of wellness. Topics include nutrition, weight management, physical activity, stress management, tobacco cessation and more.

Fitness Tracking

Earn Blue Points for tracking your fitness activity using popular fitness devices and mobile apps.



Take Wellness on the Go

Check out the Well onTarget AlwaysOn Wellness mobile app, available for iPhone® and Android™ smartphones. It can help you work on your wellness goals — anytime and anywhere.

1. Well onTarget is a voluntary wellness program. Completion of the Health Assessment is not required for participation in the program.

2. Blue Points Program Rules are subject to change without prior notice. See the Program Rules on the Well onTarget Member Wellness Portal for more information.

3. This does not apply to points you earn for completing Fitness Program activities.

4. Member agrees to comply with all applicable federal, state and local laws, including making all disclosures and paying all taxes with respect to their receipt of any reward.

The Fitness Program is provided by Tivity Health®, an independent contractor that administers the Prime Network of fitness centers. The Prime Network is made up of independently owned and operated fitness centers. Blue Cross and Blue Shield of Illinois makes no endorsement, representations or warranties regarding third-party vendors and the products and services offered by them.

Well onTarget is an informational resource provided to members and is not a substitute for the independent medical judgment of a health care provider. Members are instructed to consult with their health care provider before beginning their journey toward wellness.